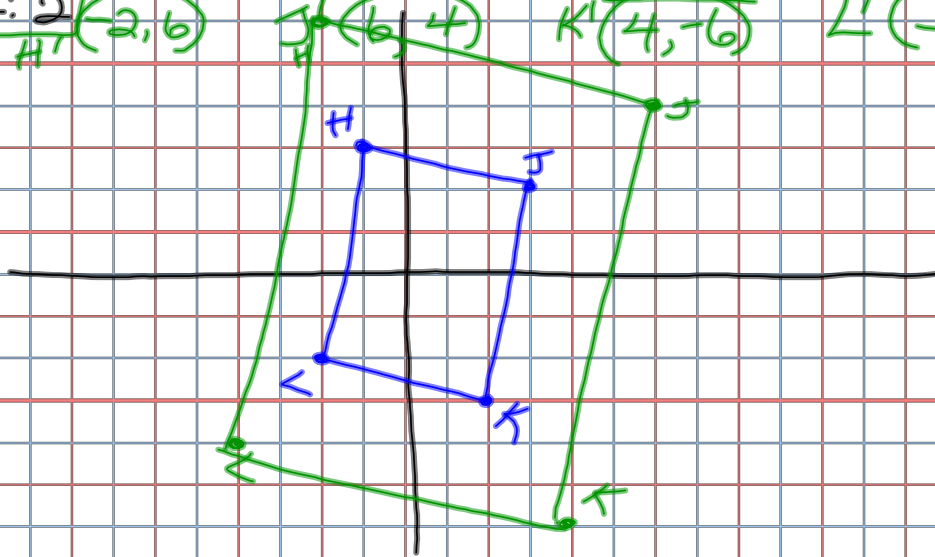
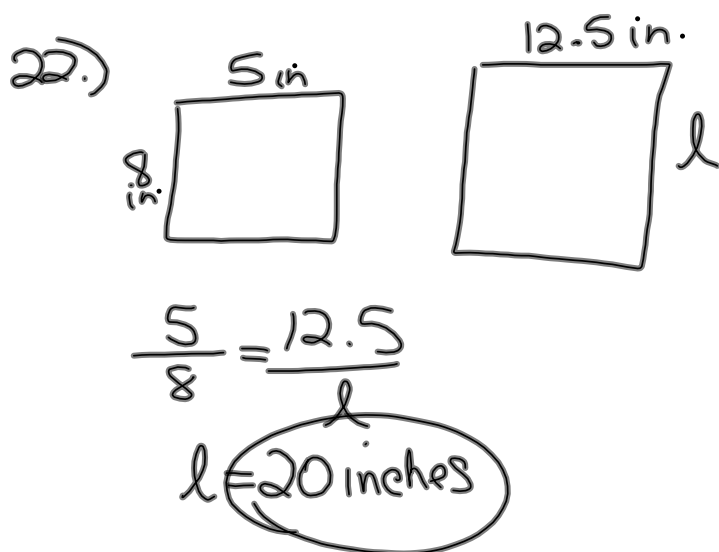


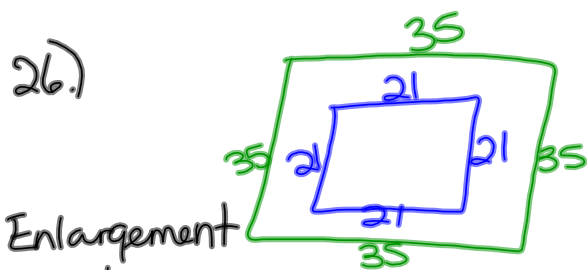
6.)  $H(-1, 3)$   $J(3, 2)$   $K(2, -3)$   $L(-2, -2)$   
 $H'(-2, 6)$   $J'(6, 4)$   $K'(4, -6)$   $L'(-4, -4)$   
 SF: 2



18. blue-original (5,0) (5,5) (0,2.5)  
green-dilation (3,0) (3,5) (0,1.5)

Reduction  $\boxed{\frac{3}{5} \text{ SF}}$

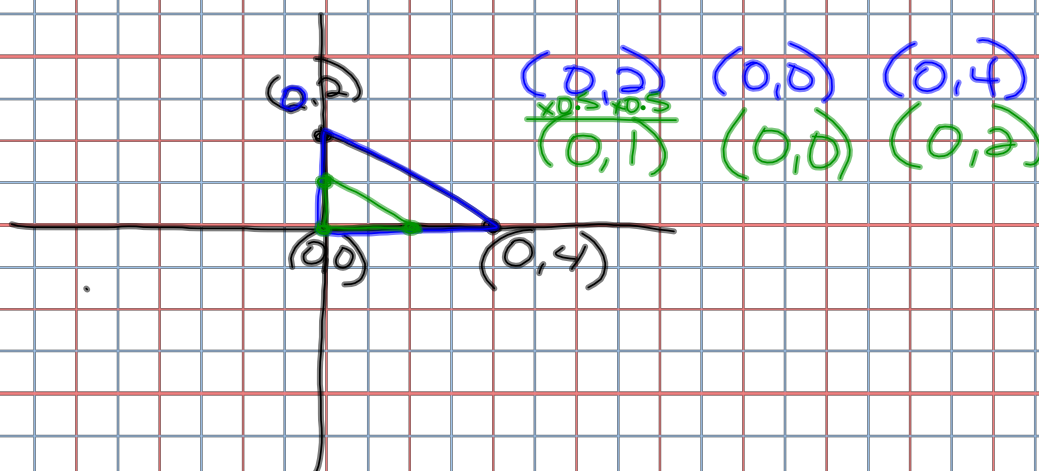


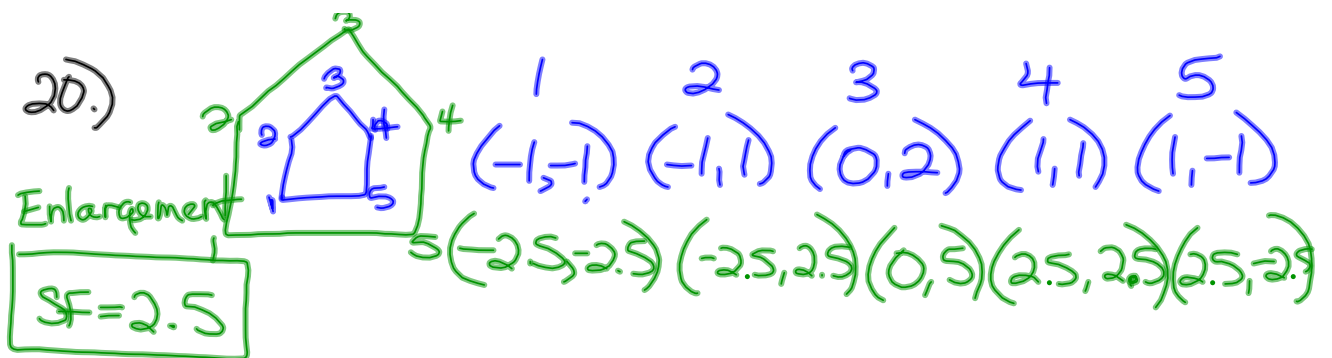


$$\boxed{\frac{35}{21}} \text{ or } \frac{21}{35}$$

$$\frac{35 \div 7}{21 \div 7} = \frac{5}{3} \text{ SF}$$

(b) Reduction





$$\begin{array}{l} 10.) \quad (x, y) \quad \boxed{SF = k} \\ \longrightarrow (kx, ky) \\ \quad \quad (xk, yk) \end{array}$$

Enlargement  $> 1$   
Reduction  $< 1$



$$A(1,1)$$

$$A'(3,3)$$