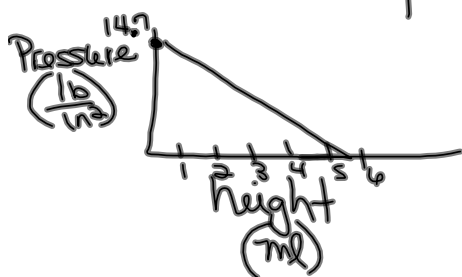


b.)

$$\begin{array}{r} 40 - 7h = 10 \\ -40 \quad -40 \\ \hline -7h = -30 \\ \frac{-7h}{-7} = \frac{-30}{-7} \\ h = 4\frac{2}{7} \text{ hours.} \end{array}$$

36.)

x	y
0	14.7
1	10.2

 $(0, 14.7)$ $(1, 10.2)$ 

Domain = x values
 $\{0, 1, \dots\}$

Range = y values
 $\{14.7, 10.2, \dots\}$

p. 818
 4-6 write the equation
 then solve
D/U

P 207
 (1-6) write the equation
 then solve
D/U

is =
 of x
 quotient \div
 product \times
less than
what? less than #
 less
 —

quotient \div
 $n =$ the number

$$\frac{n}{3} \text{ quotient of}$$

$$\begin{array}{r} \text{less } 8 \quad -8 \\ \text{is } 16 \quad = 16 \end{array}$$

P. 207. #1

$$\frac{n}{3} - 8 = 16$$

then solve $\frac{D}{u}$

$$9n - 20 = 7$$

|
less 20

20 less than the product of a number and 9
 $9n - 20$