

$P(x \rightarrow, y \downarrow)$

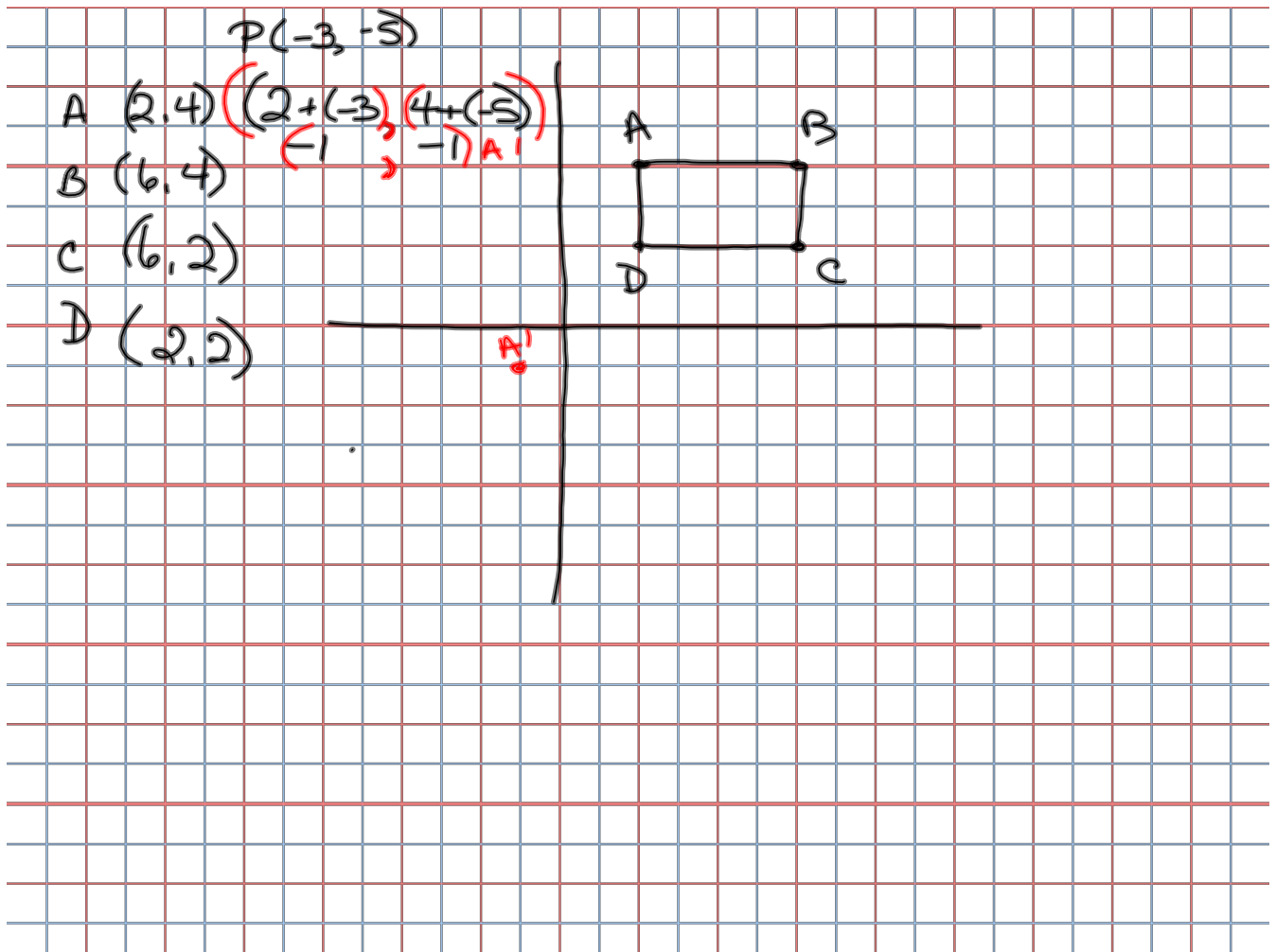
$A(1, 1)$

$P(-3, -5)$

$P\left(\begin{array}{l} 1+(-3) \\ 1-5 \end{array}, \begin{array}{l} 1+(-5) \\ 1-5 \end{array}\right)$   
 $A(-2, -4)$

$A'$

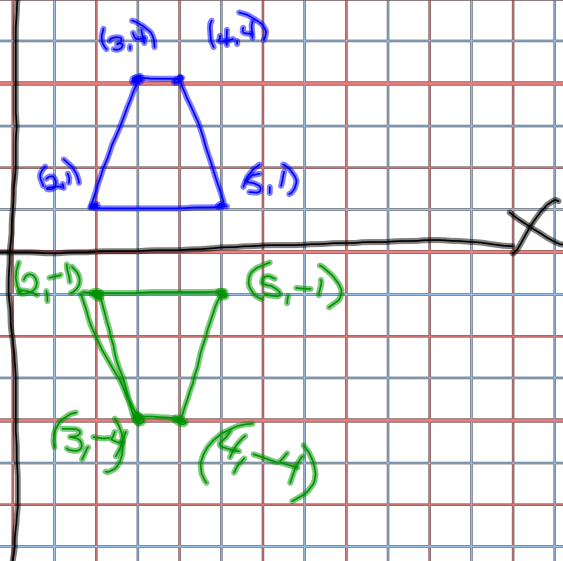
## 2-7 Translations and Reflections

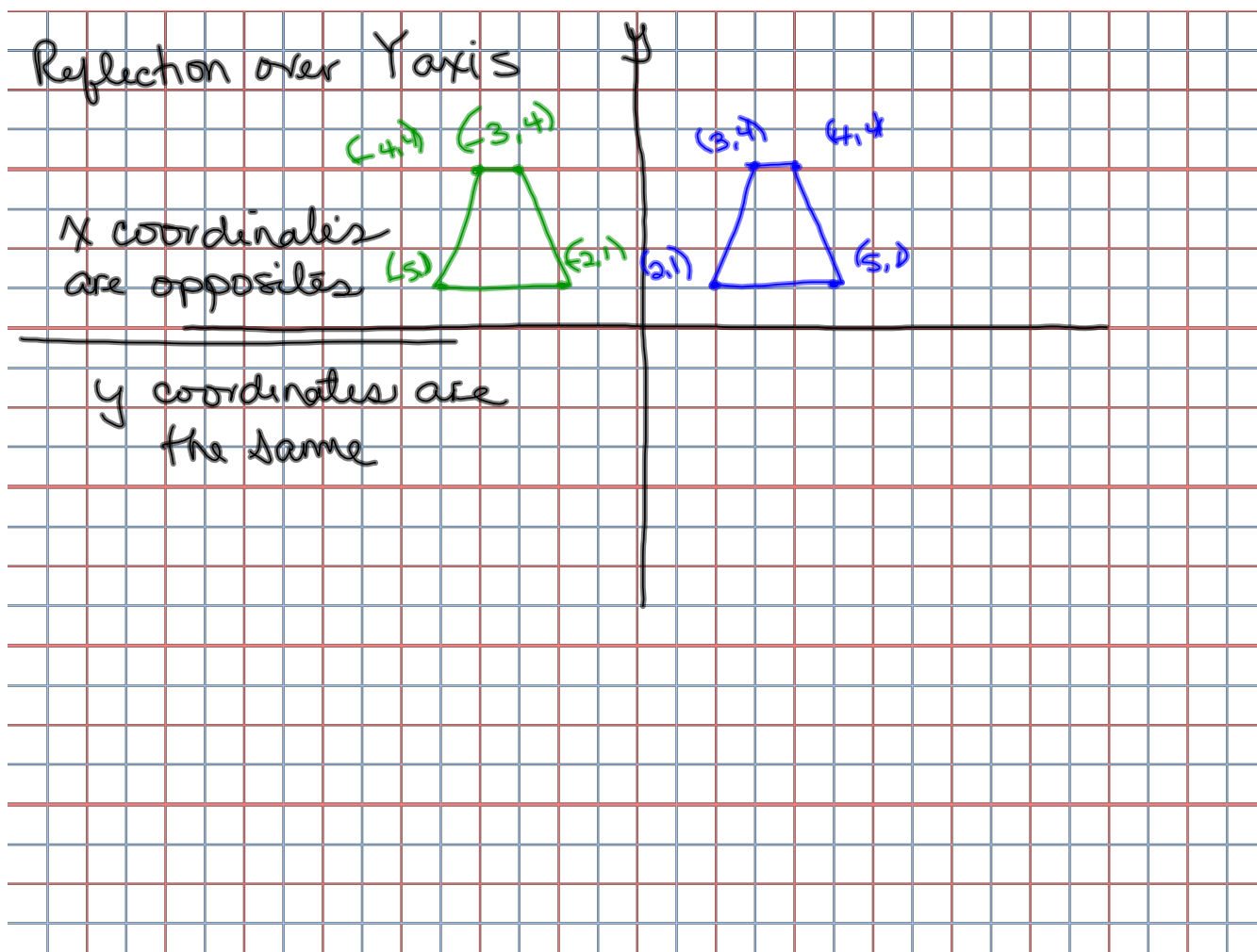


## Reflection over the x axis

x coordinates  
are the same

y coordinates  
are opposites





Original  
X Y Z

New  
X' Y' Z' (Prime)